

NATURAL STONE DEPOT GROUP

(We Believe in Best)

Natural Stone Depot Group established in 1981 a well known and prestigious name in industry. We are located in (JAIPUR) **Rajasthan a well known hub of sandstone in entire world** with **8 states of art factories** in various part of country for processing of different products.

Core Competencies:

- ✓ Quality Product
- ✓ Timely Delivery
- ✓ Competitive Price
- ✓ Customized Production

Material we deal in:

- ✓ Best quality Sand stone, Marble, Granites, Lime stone, Mosaic Tiles, Cobbles, Slate Stone, pebbles.

Products we produce:

- ✓ Tiles & Slabs of Granite, Marble, Sand Stone, Slate etc.
- ✓ Stone Cladding for exterior and interior.
- ✓ Paving and driveways and Flooring
- ✓ Landscaping
- ✓ slates- flooring, roofing, cladding
- ✓ Lime Stones- paving, tiles, cobbles
- ✓ Sand Stone- Cladding, flooring wall blocks.
- ✓ Balustrades, pillars, project work.
- ✓ Garden stones
- ✓ Pool coping and Surroundings
- ✓ Building stones
- ✓ Wall Claddings
- ✓ Cobbles, Tumbles, Antique finish, Sand Blasted and much more...

We have complete solutions for your Natural Stone needs for external and internal building.

Contact us:

Ph. +91-141-5104196, + 91 141 401 4196, MOBILE: +91-9829154101

Fax: +91-141-5114196

Email : info@naturalstonedepo.com

Website : www.naturalstonedepot.com



**FLOWER
POTS**

NATURAL STONE DEPOT GROUP

(We believe in best)



FP-01

Flower Pot -FP-01

Length - 20" [508mm]

Width - 20" [508mm]

Height-42" [1065mm]

Weight - 450 Kg.



FP-02

Flower Pot -FP-02

Length - 15" [380mm]

Width - 15" [380mm]

Height- 28" [710mm]

Weight - 125 Kg.

NATURAL STONE DEPOT GROUP

(We believe in best)



Flower Pot -FP-03

Length - 14" [355mm]

Width - 14" [355mm]

Height- 14" [355mm]

Weight - 50 Kg.

Flower Pot -FP-04

Length - 12" [305mm]

Width - 12" [305mm]

Height- 12" [305mm]

Weight - 35 Kg



Flower Pot -FP-05

Length - 12" [305mm]

Width - 12" [305mm]

Height- 12" [305mm]

Weight - 35 Kg.



NATURAL STONE DEPOT GROUP

(We believe in best)

Flower Pot -FP-06

Length - 12" [305mm]

Width - 12" [305mm]

Height- 12" [305mm]

Weight - 125 Kg.



Flower Pot -FP-07

Length - 18" [460mm]

Width - 18" [460mm]

Height- 15" [380mm]

Weight - 75 Kg.

NATURAL STONE DEPOT GROUP

(We believe in best)

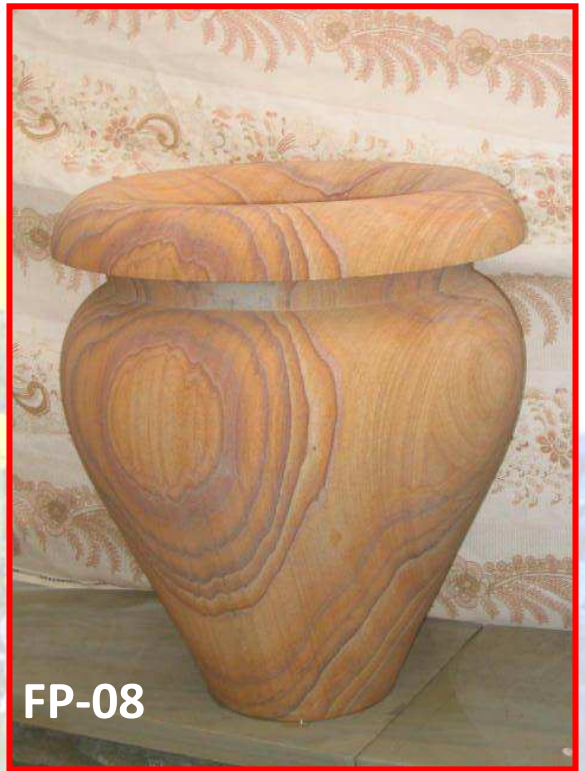
Flower Pot -FP-08

Length - 12" [305mm]

Width - 12" [305mm]

Height- 14" [355mm]

Weight - 30 Kg.



FP-08



FP-09

Flower Pot -FP-09

Length - 16" [406mm]

Width - 16" [406mm]

Height- 14" [355mm]

Weight - 40 Kg



FP-10

Flower Pot -FP-10

Length - 14" [355mm]

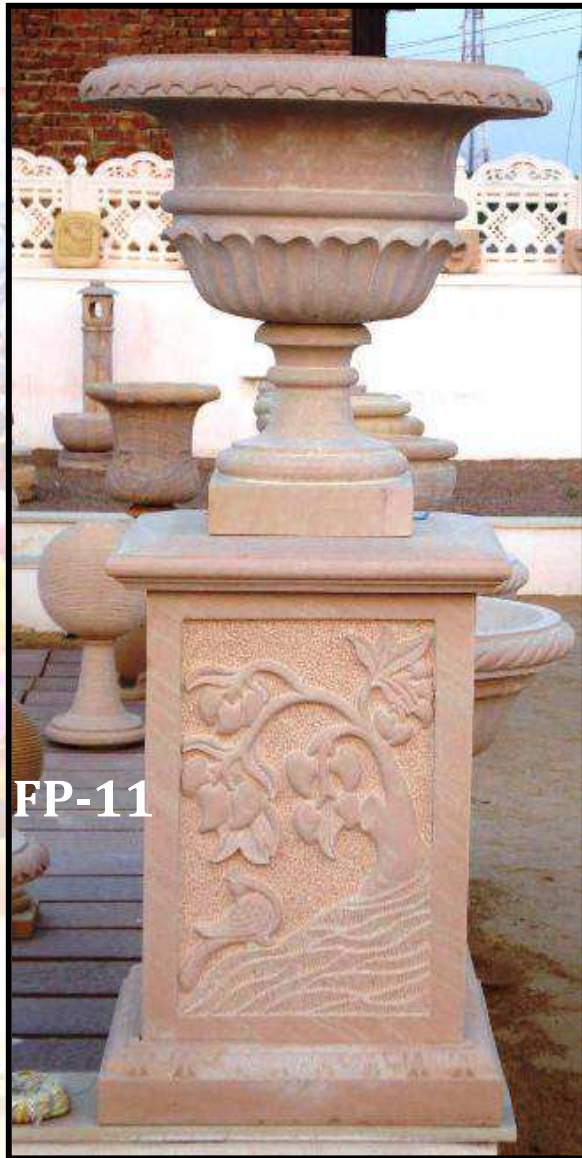
Width - 14" [355mm]

Height- 18" [460mm]

Weight - 55 Kg.

NATURAL STONE DEPOT GROUP

(We believe in best)



FP-11

Flower Pot -FP-11
Length - 26" [660mm]
Width - 26" [660mm]
Height- 54" [1370mm]
Weight - 350 Kg.



FP-12

Flower Pot -FP-12
Length - 15" [380mm]
Width - 15" [380mm]
Height- 33" [840mm]
Weight - 125 Kg

NATURAL STONE DEPOT GROUP

(We believe in best)



FP-13

Flower Pot -FP-13
Length - 24" [610mm]
Width - 24" [610mm]
Height- 36" [915mm]
Weight - 325 Kg.



FP-14

Flower Pot -FP-14
Length - 24" [610mm]
Width - 24" [610mm]
Height- 50" [1270mm]
Weight - 250 Kg

NATURAL STONE DEPOT GROUP

(We believe in best)



FP-15

Glass Urn -FP-15
Length - 20" [508mm]
Width - 20" [508mm]
Height- 28" [710mm]
Weight - 135 Kg.

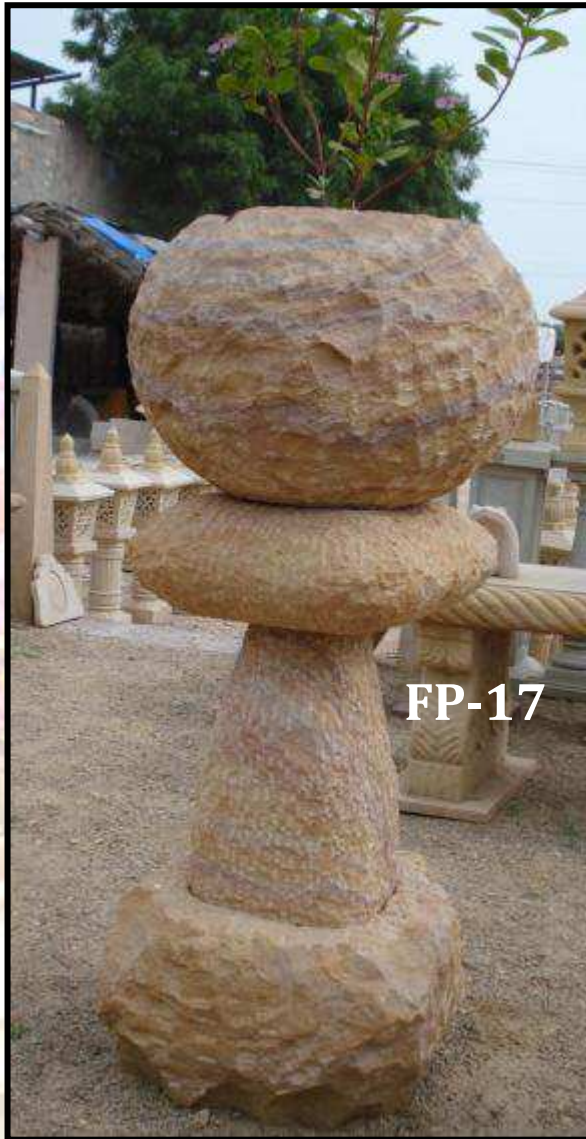


FP-16

Urn (Pot) -FP-16
Length - 18" [460mm]
Width - 18" [460mm]
Height- 21" [535mm]
Weight - 85 Kg.

NATURAL STONE DEPOT GROUP

(We believe in best)



FP-17

Flower Pot -FP-17
Length - 20" [508mm]
Width - 20" [508mm]
Height- 44" [1115mm]
Weight - 300 Kg.



FP-18

Urn (Pot) -FP-18
Length - 16" [405mm]
Width - 16" [405mm]
Height- 30" [760mm]
Weight - 100 Kg

NATURAL STONE DEPOT GROUP

(We believe in best)



FP-19

*Urn (Pot) -FP-19
Length - 21" [535mm]
Width - 21" [535mm]
Height- 21" [535mm]
Weight - 165 Kg*



FP-20

*Handle Pot -FP-20
Length - 18" [460mm]
Width - 18" [460mm]
Height- 24" [610mm]
Weight - 125 Kg.*

NATURAL STONE DEPOT GROUP

(We believe in best)



Ball Planter -FP-21

Dia-20" [508mm]

Weight - 175 Kg.

FP-21

Urn (Pot) -FP-22

Dia - 18" [460mm]

Height- 16" [405mm]

Weight - 100 Kg.



FP-22

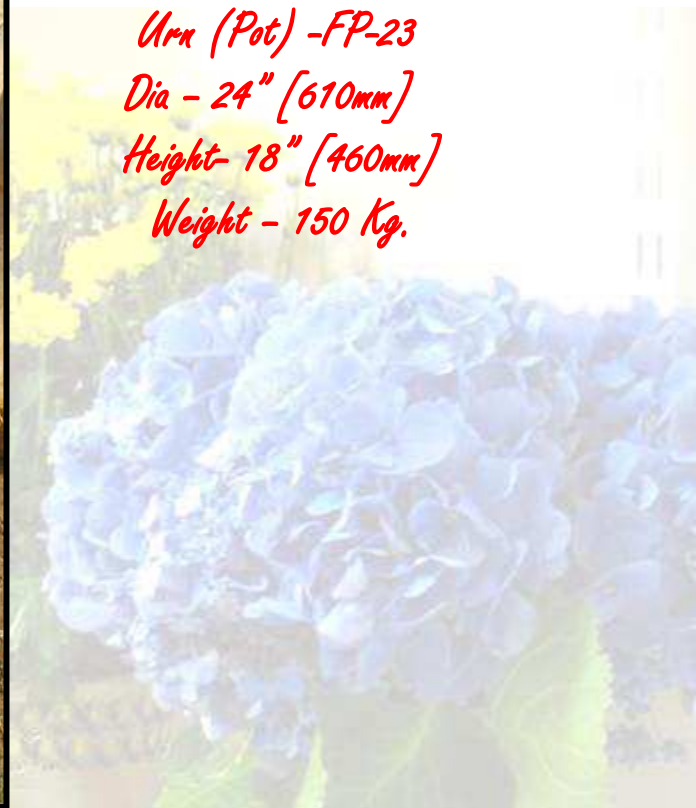
NATURAL STONE DEPOT GROUP

(We believe in best)



FP-23

*Urn (Pot) -FP-23
Dia - 24" [610mm]
Height- 18" [460mm]
Weight - 150 Kg.*



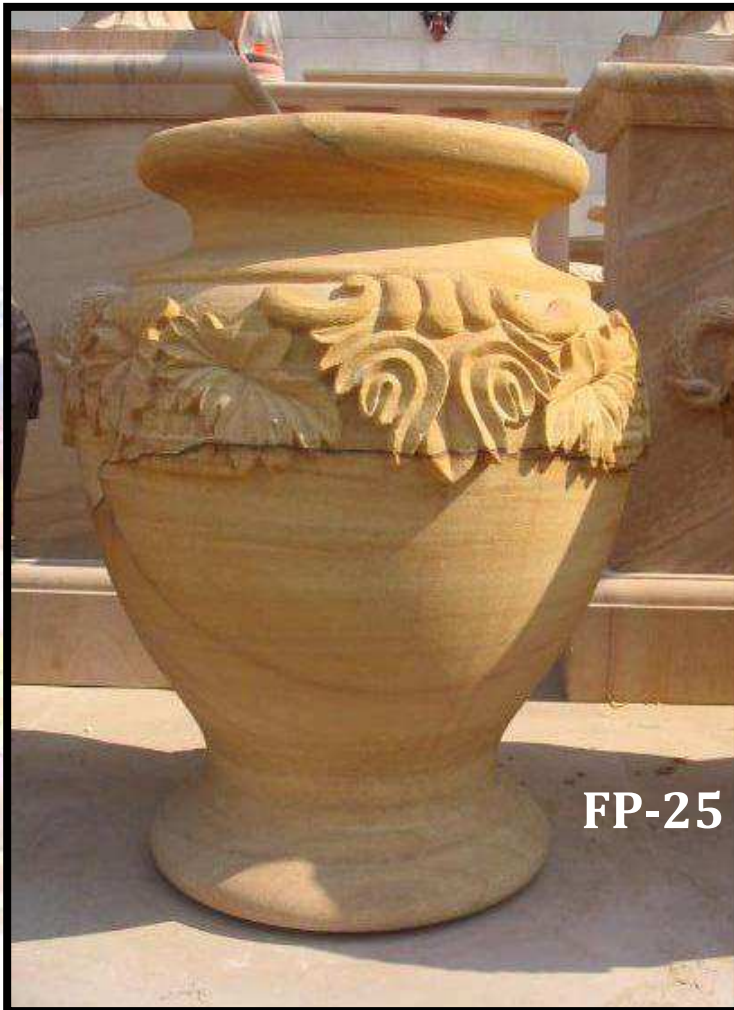
*Urn (Pot) -FP-24
Dia - 30" [760mm]
Height- 30" [760mm]
Weight - 300 Kg*



FP-24

NATURAL STONE DEPOT GROUP

(We believe in best)



FP-25

*Urn (Pot) -FP-25
Dia - 19" [480mm]
Height- 24" [610mm]
Weight - 135 Kg.*

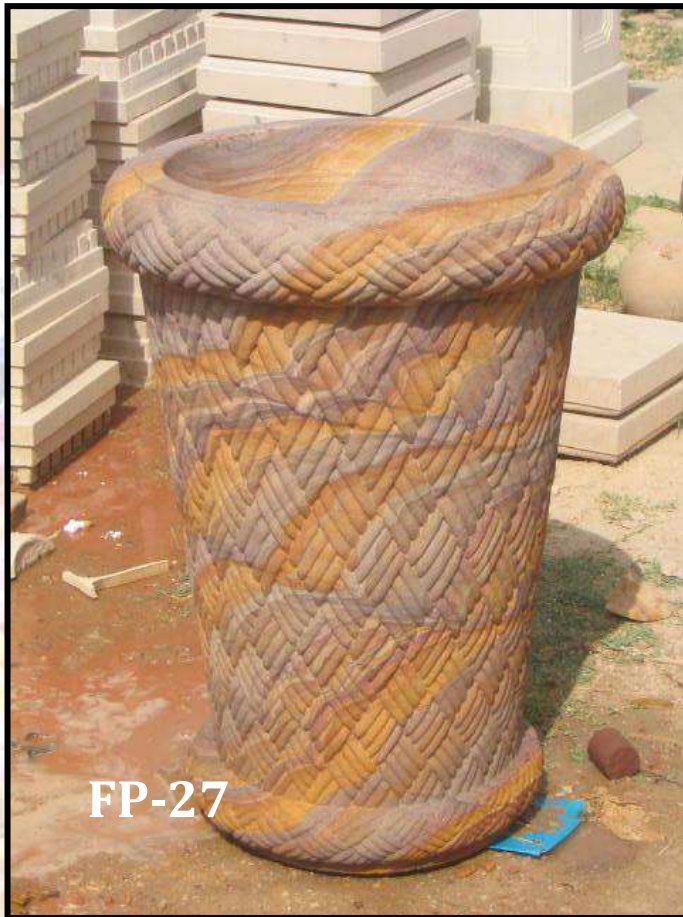


FP-26

*Agash Planter -FP-26
Dia - 19" [480mm]
Height- 24" [610mm]
Weight - 135 Kg.*

NATURAL STONE DEPOT GROUP

(We believe in best)



*Urn (Pot) -FP-27
Dia - 24" [610mm]
Height- 30" [760mm]
Weight - 275 Kg*



*Urn (Pot) -FP-28
Dia - 24" [610mm]
Height- 18" [460mm]
Weight - 165 Kg.*



NATURAL STONE DEPOT GROUP

(We believe in best)



FP-29

Tulsi Pot -FP-29
Dia - 24" [610mm]
Height- 42" [1065mm]
Weight - 350 Kg.

Urn (Pot) -FP-30
Dia - 24" [610mm]
Height- 24" [610mm]
Weight - 180 Kg.



FP-30

NATURAL STONE DEPOT GROUP

(We believe in best)



Flower Pot -FP-31

Length - 17" [430mm]

Width - 17" [430mm]

Height- 17" [430mm]

Weight - 100 Kg.



Flower Pot -FP-32

Length - 12" [305mm]

Width - 12" [305mm]

Height- 12" [305mm]

Weight - 35 Kg.



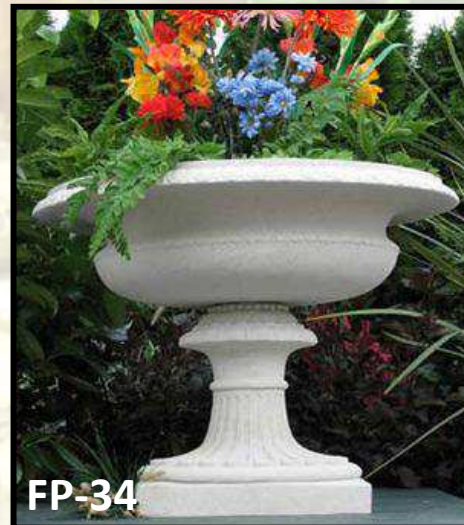
Flower Pot -FP-33

Length - 12" [305mm]

Width - 12" [305mm]

Height- 12" [305mm]

Weight - 35 Kg.



Flower Pot -FP-34

Dia - 24" [610mm]

Height- 21" [530mm]

Weight - 125 Kg.